

# MAQUET

## OPERATING TABLE SYSTEM ALPHAMAQUET 1150

SURGICAL WORKPLACES





## FORWARD-LOOKING MEDICAL TECHNOLOGY THAT PAYS OFF IN ECONOMIC TERMS **MAQUET – The gold standard**



**OR work is team-work:** In order to attain a high degree of process security in the OR, every move has to be right, man and machinery have to harmonise perfectly. This is the reason why MAQUET thinks in systems, and why it has expanded its competence to cover three business areas: Surgical Workplaces, Cardiopulmonary and Critical Care.

MAQUET offers complete medical technology solutions for operating theatres and intensive care units, guaranteeing optimum treatment for patients and the greatest-possible working comfort for personnel. Solutions which also pay off in economic terms. The foundation for this new standard is the MAQUET product portfolio, which sets forward-looking standards with regard to quality, reliability, innovation and service.

MAQUET – The Gold Standard.

# A SUCCESSFUL OPERATION BEGINS WITH THE PERFECT POSITIONING OF THE PATIENT

## THE OPERATING TABLE SYSTEM ALPHAMAQUET 1150

**Every operation places fresh demands:** The operating table system ALPHAMAQUET 1150 is ready to meet these demands: It offers a virtually unlimited variety of possibilities for ideal patient positioning in all surgical disciplines.

The wide range of accessories also allows for specialised surgical procedures. Furthermore, the world's most diverse range of accessories made of radiolucent carbon fibre is offered for ALPHAMAQUET 1150. The result: Intra-operative imaging par excellence.

**Patient weights of up to 360 kg:** Every patient needs comfort and security. ALPHAMAQUET 1150 sets standards in terms of both flexibility and stability.

The operating table system bears patients with a weight of up to 225 kg (plus 20 kg accessories), and under certain circumstances of as much as 360 kg.



**Universal table-top:** Simple, physiologically correct patient positioning united with extraordinary operating comfort.

**Universal table-top II:** Lots of comfort for the patient and the surgeon – the motor-powered leg holder adjustment allows for intra-operative adjustment of the patient's position.

**Surgical table-top for urology, vascular surgery and orthopedics:** May be adjusted precisely for the patient and the surgeon, with 400 mm longitudinal shift and the upright positioning of the back section, for example.

**Surgical table-top for vascular surgery, interventional radiology, orthopedics and traumatology:** Frameless central carbon fibre table-top allows for 360° radial radiolucency.



**Surgical table-top for vascular surgery and orthopedics:** The economical alternative when a high degree of stability for the patient and a high degree of manoeuvrability for the surgeon are required.

**Surgical table-top with Maquetmatic:** Table-top for general surgery and MIS, maximum of 6 sections, as well as 4-part leg plate / knee crutch combination Maquetmatic.

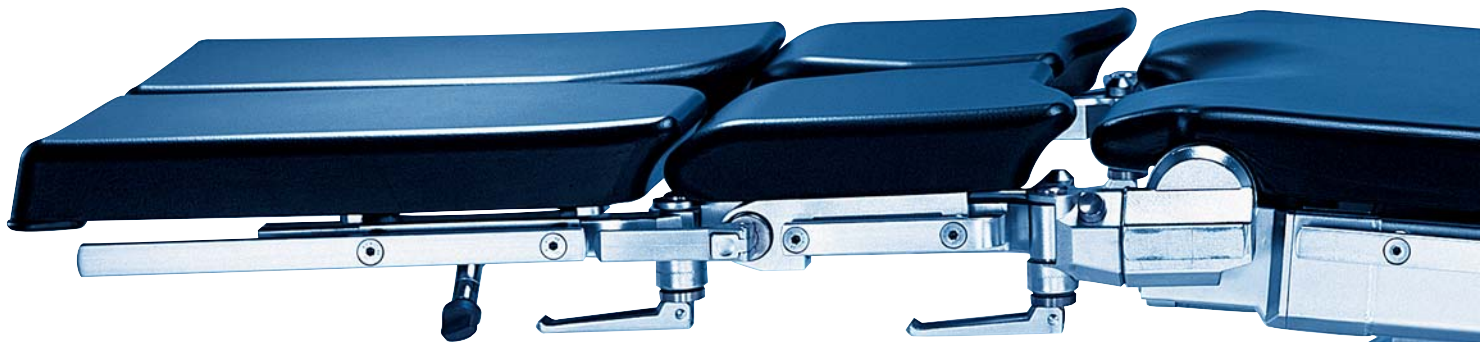
**Surgical table-top for surgery in the head area:** Flexible system for neurosurgery, ENT and maxillofacial surgery.

**Universal table-top for traumatology and orthopedics:** Excellent working conditions for the surgical team and for the use of a C-arm.



*ALPHAMAQUET 1150: A universal surgical table-top for all surgical disciplines.*

# EXTRAORDINARY STRENGTHS ARE SEEN IN PRACTICE-ORIENTED DETAILS THE ADVANTAGES OF THE ALPHAMAQUET 1150



**Optimum padding design:** Overlapping safety paddings cover all the metal parts and table-top joints; excellent patient protection with HF surgery.



**No open bellows:** The closed column cladding ensures outstanding hygiene and reduces the costs for cleaning and disinfection.



**Simple machine cleaning:** The table-top and transporter as well as all accessories for the washable model may be machine decontaminated, thus ensuring the highest hygiene standards.

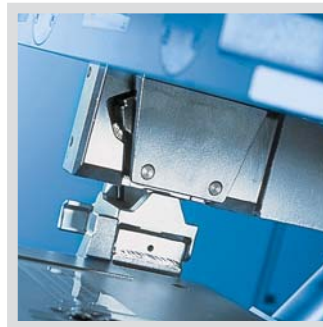


**At first glance:** Reliability and ease of operation ensure the best working conditions for the surgical team. The central surgical table column and the modular construction of the table-tops allow for adjustment to all surgical disciplines. Thanks to well thought-out accessories every possible patient positioning may be established quickly and securely.

**From the very outset:** A long service life, ease of cleaning and disinfection, as well as time gains in the pre- and post-operative phases guarantee excellent value-for-money.



**Strong and gentle:** The powerful electric motors ensure reliable adjustment. The infinitely variable soft run is gentle on the drive unit and ensures jolt-free movement – for the gentle positioning of the patient.



**Sensor-monitored table-top acceptance:** The locking of the surgical table-top is monitored electronically. In this respect the surgical table column recognises whether the table-top has been accepted from the foot or head position and assigns the function keys accordingly.



**High-quality surfaces:** All the parts are made of stainless steel and electrolytically polished, making them smoother. As a consequence the surfaces are hygienic and less porous.

# VALUABLE TIME GAINS ARE A QUESTION OF ORGANISATION THE CIRCULATION SYSTEM WITH ALPHAMAQUET 1150

**Transfer:** With the patient transfer system TRANS-MAQUET the pre- and post-operative transfer phase is reduced to one process in each case. Comfortable, hygienic and safe for patients and nursing staff. While work is still going on in the OR, the next patient can be accepted into the transfer unit and taken to induction.



**Narcosis:** Ideal working conditions for anesthesia. With our optional external table-top control unit the table-top may also be adjusted outside the OR, e.g. for basal narcosis with an upright back section.



**Table-top acceptance:** The transfer and acceptance of the table-top may be conducted by just one person. In this respect the workflows are geared to speed and the highest degree of safety. For instance with a choice of acceptance from both sides or through the automatic locking of the table-top with sensor monitoring.



**Patient transport:** The table-top transporters are easy to manoeuvre and allow for precise positioning with the minimum amount of strength required.



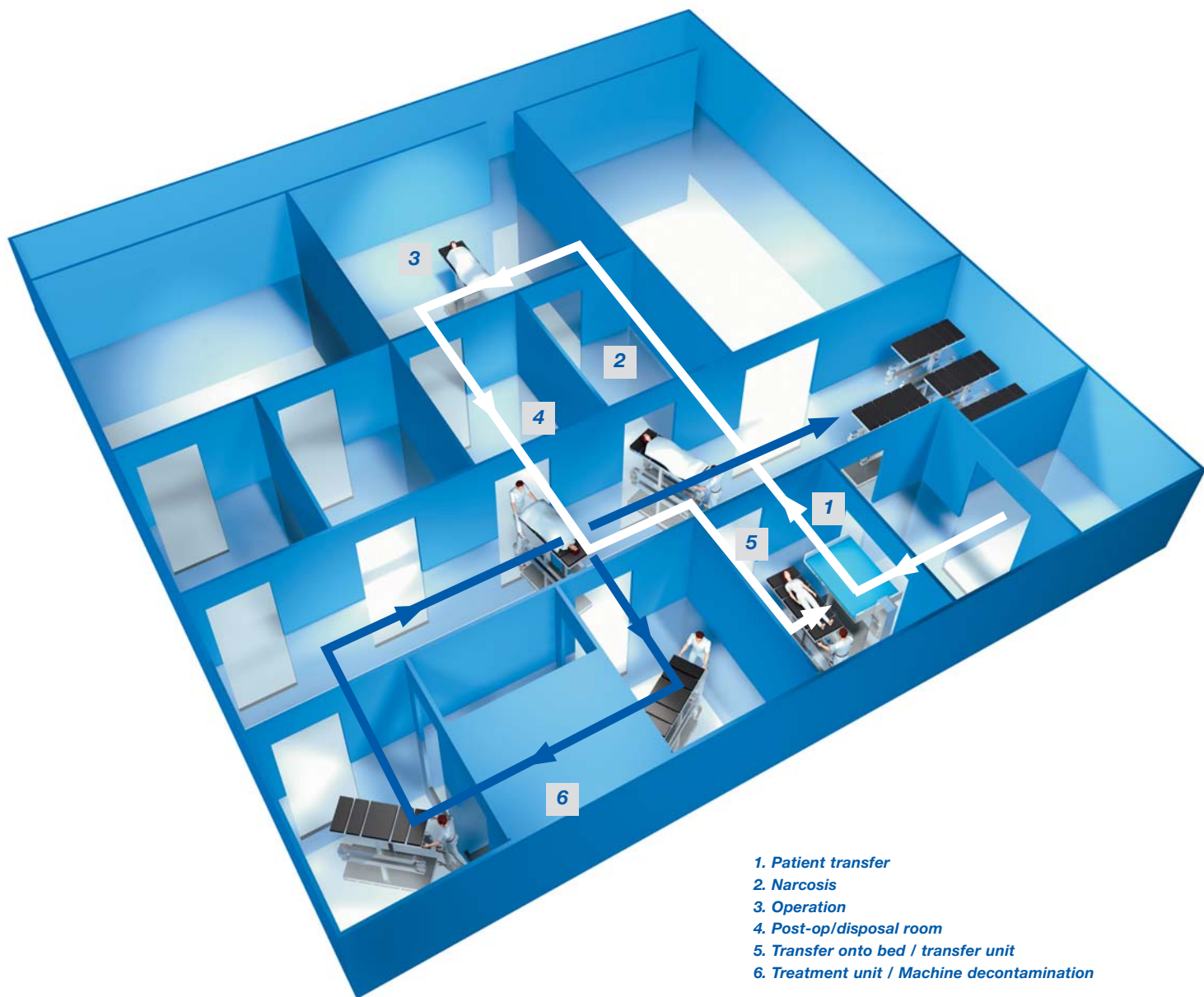
**Table-top treatment:** All the MAQUET surgical tables and accessories are machine washable. Tailored precisely to the materials to be sterilised, the decontamination unit CLEANMAQUET takes care of cleaning and disinfection. This enhances safety and economic efficiency – automatically as it were.





**The MAQUET OR patient circulation principle lowers costs:** For many years now MAQUET has consistently been improving workflows in the OR. Waiting times between operations may be reduced with the MAQUET

patient circulation principle. Patient transfer, induction, operation, post-op/disposal room and cleaning – each work-stage is co-ordinated with the subsequent stage so as to minimise change-over times.



- 1. Patient transfer
- 2. Narcosis
- 3. Operation
- 4. Post-op/disposal room
- 5. Transfer onto bed / transfer unit
- 6. Treatment unit / Machine decontamination

The MAQUET patient circulation principle allows for high capacity utilisation and flexible use of operating suites.

# THE RIGHT SOLUTION FOR ALL NEEDS

## CONTROL AND OPERATION OF THE ALPHAMAQUET 1150



**Voice control:** Using the integrated infra-red interface the surgical table may be operated with the control system Karl Storz OR1®. All the functions may be actuated using voice control.



**Touch-screen:** The control system Karl Storz OR1® also has a touch-screen function. Everything is taken care of from within the sterile area.



**Quick-Set:** For every OR application the surgeon may activate individually pre-defined device configurations with pre-set basic parameters.

**Karl Storz OR1®:** The demands placed on medical technology are constantly on the rise. This is why MAQUET attaches great significance to options for expansion and modernisation. Standard interfaces, for example, guarantee compatibility with modern OR control systems – and also those of the coming generations.

**Variable control:** All the motorised functions of the ALPHAMAQUET 1150 operating table system may be controlled in a number of different ways: Manual operation with a corded or infra-red version guarantees secure control – even from greater distances. The foot switch with three rocker switches – to adjust the height, angle and positioning – allows for hands-free operation.



**Carbon fibre – the radiolucent material:** Wherever it makes sense MAQUET uses extremely stable and radiolucent carbon fibre materials. This applies in particular to traumatology, orthopedics and vascular surgery. For virtually all the relevant indications there is the possibility to create low-artefact images using state-of-the-art imaging amplifiers – also using 3-D technology.

**Perfect integration:** As a further alternative the operating table may also be operated using a wall-mounted control panel (only in conjunction with column 1150.02). This option offers not only direct control of all the motor-powered functions, but also additional possibilities such as the storage and recall of ten individual table positions. For this reason data transfer is not by radio telephony but using infra-red signals. Furthermore, there is an override panel in the table column, e.g. as an emergency operating unit in the event that the hand unit cannot be found.



*MAQUET paves the way for future X-ray technologies. A number of table-top and accessories without metal structures are radiolucent through 360° and thus fulfil the demands placed by state-of-the-art C-arms with 3-D technology.*

# SECURE BASIS FOR GREATER FLEXIBILITY AND DIVERSITY OF APPLICATIONS

## THE ALPHAMAQUET 1150 OPERATING TABLE COLUMNS

### **Stationary operating table column:**

*May be turned through ca. 350° and set in any desired position. With a choice of either a flush-mounted built-in version sealed against liquid spills or a surface-mounted version for ease of assembly on pre-fabricated floorings.*



### **Mobile operating table column:**

*The column may be moved by a transporter together with the surgical table-top and positioned in any desired location. Current supply using maintenance-free rechargeable batteries integrated into the base; sufficient for at least one OR week.*



**Stable and nevertheless flexible:** What seems to be a contradiction in terms is a matter of course for the ALPHAMAQUET 1150 operating table columns. Be it stationary, mobile or independently manoeuvrable – in each case they are the central, stable fulcrum of the operating table system. And for really "heavy cases" a load of as much as 360 kg may be accommodated under certain circumstances – with full electro-mechanical functionality, on the operating table column 1150.02.

**Precision as the driving force:** With all the operating table columns four geared motors control the column height, angle and tilt. All the movements start and stop gently without any jolts thanks to universally-adjustable electronic motor regulation. A further convenience: Practice-oriented adjustment speeds.

All the technical details are to be found on pages 22/23.

**Independently manoeuvrable table column:** Fitted with its own wheels this column may be moved with the table-top and patient without the need to deploy a transporter. Offers valuable flexibility, for example in the event of later patient positioning under the incoming air vents of an air supply ceiling.



## INTER-DISCIPLINARY SOLUTIONS ALPHAMAQUET AND AWIGS / VIWAS

**The quickest medical care, the best care:** With AWIGS and VIWAS MAQUET has allowed inter-disciplinary work to enter a new dimension. For AWIGS (Advanced Workplace for Image Guided Surgery) and VIWAS (Vascular Interventional Workplace for Advanced Surgery) are unique operating table systems that, for the first time ever, allow diagnosis, operation and results monitoring at one

workplace. The radiolucent transfer board on the tabletops may be used for the transporter and the computer tomograph, thus allowing disciplines to merge – operating and monitoring the results at the same time using imaging procedures. ALPHAMAQUET 1150 is compatible with AWIGS / VIWAS, and as early as the first diagnosis it enhances the level of patient care.





**Enhanced treatment flexibility, greater success:** Thanks to the opportunity to combine the successful MAQUET systems the possibilities for patient and OR management are enhanced. As a result of the compatibility of the systems, the OR team has a choice of operating suite (AWIGS / VIWAS or ALPHAMAQUET 1150). Due to the deployment of the transfer

board there is no need for risky patient transfers. The patient is positioned on the fully radiolucent transfer board and thus slid gently without any additional transfer from the transporter onto the respective surgical table. The utilisation of the OR is optimised and valuable time is gained – time that can save lives.



# THE RANGE TO MEET ALL NEEDS

## THE ALPHAMAQUET TABLE-TOPS

**High-quality construction:** ALPHAMAQUET 1150 table-tops have been specially developed for effective deployment in modern operating rooms. They may be accepted onto the operating table column with the transporter from the head or foot position. The motorised settings may be returned to the "home" position automatically using the zero position switch. Also as standard are side guide tracks in either the European norm (10 x 25 mm) or US norm, as well as guide rails for X-ray cassettes.

**Positioning comfort and machine decontamination:**

The paddings are either integrated foamed PUR or SFC segments. Given the patient's body weight and temperature the Special Foam Core (SFC) padding is thermo-modulating, and thus adapts perfectly to the patient's body shape – among other things this leads to improved pressure distribution. The PUR paddings are suited to machine decontamination. Both types of padding are radiolucent, discharge static electricity and are completely latex-free.



**Modular universal surgical table-top 1150.30:** Universal operating table-top for a wide range of applications. Comprises a seat section and a lower back plate for modular assembly to suit a number of surgical disciplines. Made of nickel-chrome steel with guide tracks and guide rails for X-ray cassettes. Automatic zero position for all motorised functions.



**Universal table-top 1150.19:** Single trunk section with SFC padding. Motorised adjustment for longitudinal shift of 425 mm and for leg plates/knee crutches, either individually or jointly.



**Universal table-top for traumatology and orthopedics 1150.20:** Maximum of ten sections. Back plate may be tilted through ca. 70° using motor. Seat plate with two separate removable corner pieces. Removable leg plate pair, and two extension bars each with two revolving joints, and basic accessories. PUR padding; also available with SFC padding.



**OR table-top for head surgery 1150.25:** Maximum of five sections with head plate, two-part back plate, seat plate and fixed leg plate. Motor-powered longitudinal shift of 275 mm, plus motorised back plate up/down. Leg plate may be tilted downwards manually using pressure-assisted brakes. OR table-top with integral foam padding





**OR table-top for vascular surgery, interventional radiology, orthopedics and traumatology 1150.16:** Frameless single trunk plate made of carbon fibre composite material on light metal supports. The CFC table-top has a longitudinal shift of 1200 mm and a lateral shift of 200 mm. SFC padding.



**OR table-top for urology, orthopedics and vascular surgery 1150.23:** Two-section trunk plate with manual pressure-assisted adjustment of back plate by ca. 30°. Table-top with power-driven longitudinal shift of 400 mm. SFC padding.



**OR table-top for general surgery and MIS 1150.22:** Six sections with head plate, trunk plate and four-part leg plate/knee crutch combination Maquetmatic. Table-top with power-driven longitudinal shift of 475 mm. Maquetmatic is integrated into the table-top with four individually removable sections. One-hand operation for the control of combined up/down movements.



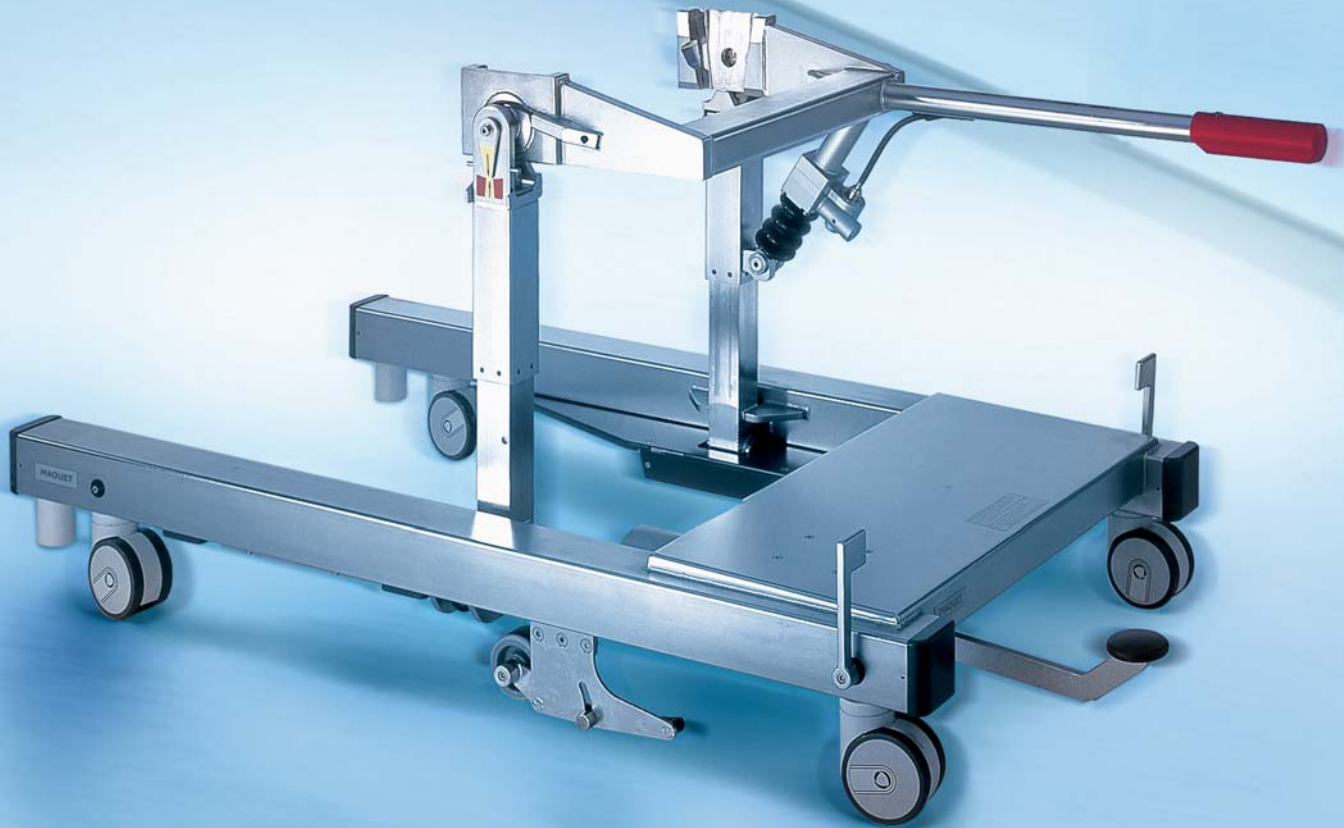
**OR table-top for orthopedics, vascular surgery and traumatology 1150.15:** Single-section trunk plate with power-driven longitudinal shift of 475 mm. SFC padding.



**OR table-top for pediatrics 1140.14:** Two sections with trunk plate and removable leg plate. SFC padding, 365 mm wide, manual longitudinal shift of 440 mm.



**OR table-top for ophthalmology 1140.17:** With shoulder plate that may be elevated for effective support of the neck. The height of the head support may be adjusted using two retractable hand cranks, tilt angle is adjusted with brake feature. Ca. 600 mm wide, with SFC padding.



## EXCELLENT DRIVING QUALITIES THE ALPHAMAQUET 1150 TRANSPORTER

**Diversity of transport:** Three transporter types are available for the table-tops in the operating table systems ALPHAMAQUET 1150 and BETAMAQUET 1140 – the transporter 1146.60A0 with a rigid design, the transporter 1146.61A0 with quick tilt adjustment (Trendelenburg / reverse Trendelenburg) and the transporter 1146.62A0 with tilt and height adjustment. All the transporters are characterised by their excellent manoeuvrability, all may be adjusted longitudinally and laterally, and all are designed for a maximum patient weight of

225 kg, optionally 360 kg plus 20 kg accessories. An additional tracking wheel, set in a central position, ensures that tight curves may be negotiated and that the transporter always moves in straight line when desired, while the central brake lever guarantees that the casters are always securely locked. Manufactured fully in nickel-chrome steel, the transporters may be mechanically decontaminated. A further benefit: The one-hand quick-locking adjustment of the Trendelenburg / reverse Trendelenburg function, integrated into the handle.

## SAFETY THANKS TO INTELLIGENT ACCESSORIES THE TRANSPONDER TECHNOLOGY FROM MAQUET

**Minimising risk factors:** Thanks to the use of transponder technology the ALPHAMAQUET 1150 offers greater user safety when it comes to leg plate operation. Accessories which may be mounted on the leg-side interface are fitted with transponders. In order

to avoid operating errors or damage the individual adjustment of the leg plates is automatically blocked by the transponder technology.



*Unique leg-plate interface:  
Swift conversion thanks to  
easy-click couplings.*



# MODULAR RANGE FOR ALL SURGICAL DISCIPLINES

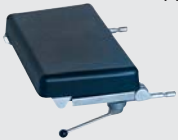
## THE ALPHAMAQUET 1150 ACCESSORIES



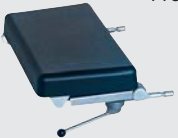
**Versatile and practice-oriented:** The extensive range of accessories for the table-top 1150.30 covers the full range of surgical disciplines. Thus there is a customised solution for every task and every patient.

### Head plates

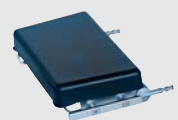
1130.52



1130.53



1130.64



1130.67



### Upper back plates

1150.31



1150.32



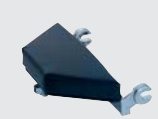
1150.33



1150.34



1150.35



1150.36

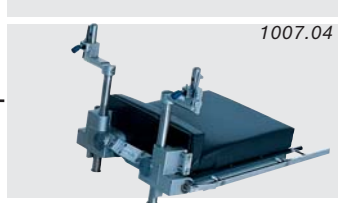


1150.37



Patient positioning examples are to be found on the enclosed poster.

Leg plate interface



# THE OPERATING TABLE SYSTEM ALPHAMAQUET 1150

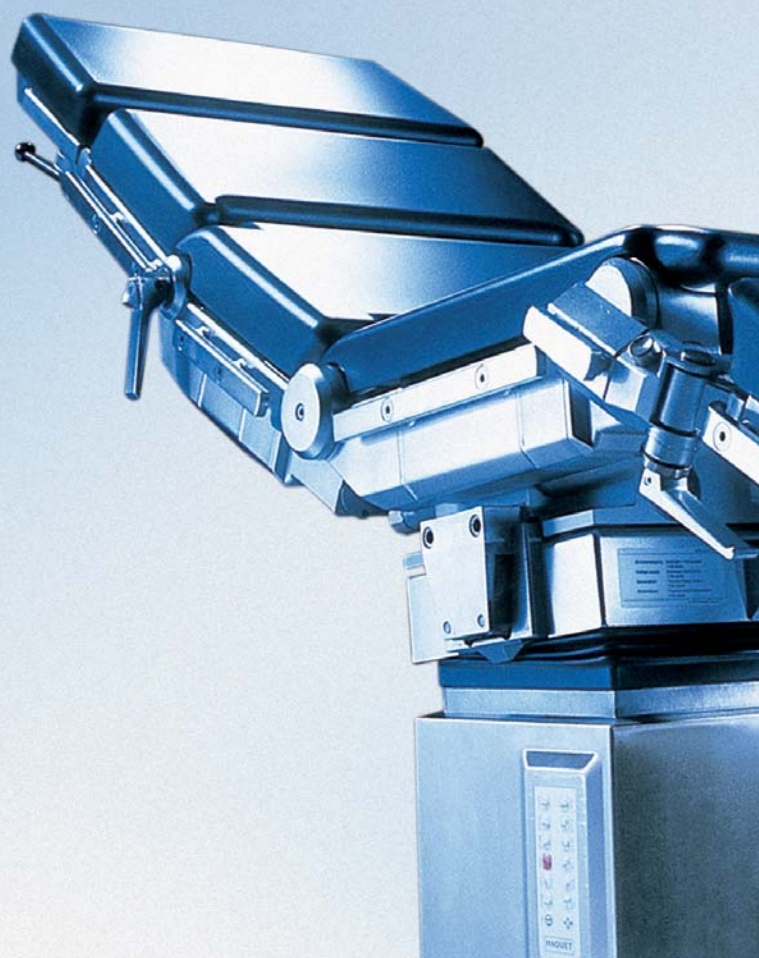
## TECHNICAL DATA

**Complete solution:** The universal table-top 1150.30 is available in a number of different versions. A series of alternative fittings, for example for the upper back plate, allows for a high degree of specialisation. Using the basic configuration, comprising a seat plate and an lower back plate, various modules may be attached for virtually every surgical discipline. The adjustment of the leg plates, lower back plate and the longitudinal position are all motor-powered.

### Technical data table-top 1150.30

#### Dimensions and Data

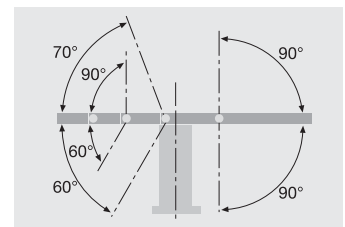
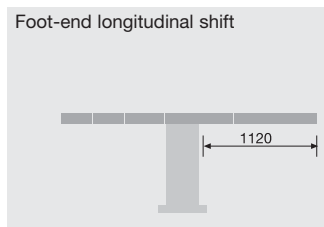
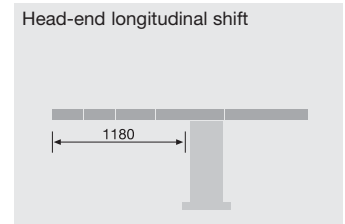
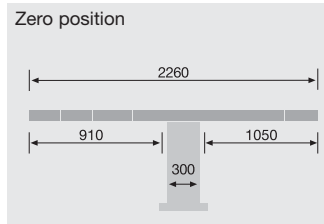
|                                                                                |               |
|--------------------------------------------------------------------------------|---------------|
| Length: With head plate 1130.53 and standard back plate 1150.31 and leg plates | 2260 mm       |
| Width OR table-top                                                             | 500/540 mm    |
| Width with side rails                                                          | 540/580 mm    |
| Height: Motor-powered adjustment areas on OR column 1150.01/02                 | 725 - 1215 mm |
| Tilt forward/backward                                                          | 40°/40°       |
| Tilt left/right                                                                | 25°/25°       |
| Lower back up/down                                                             | 70°/60°       |
| Leg plates up/down                                                             | 90°/90°       |
| Longitudinal adjustment                                                        | 320 mm        |



## Operating table columns

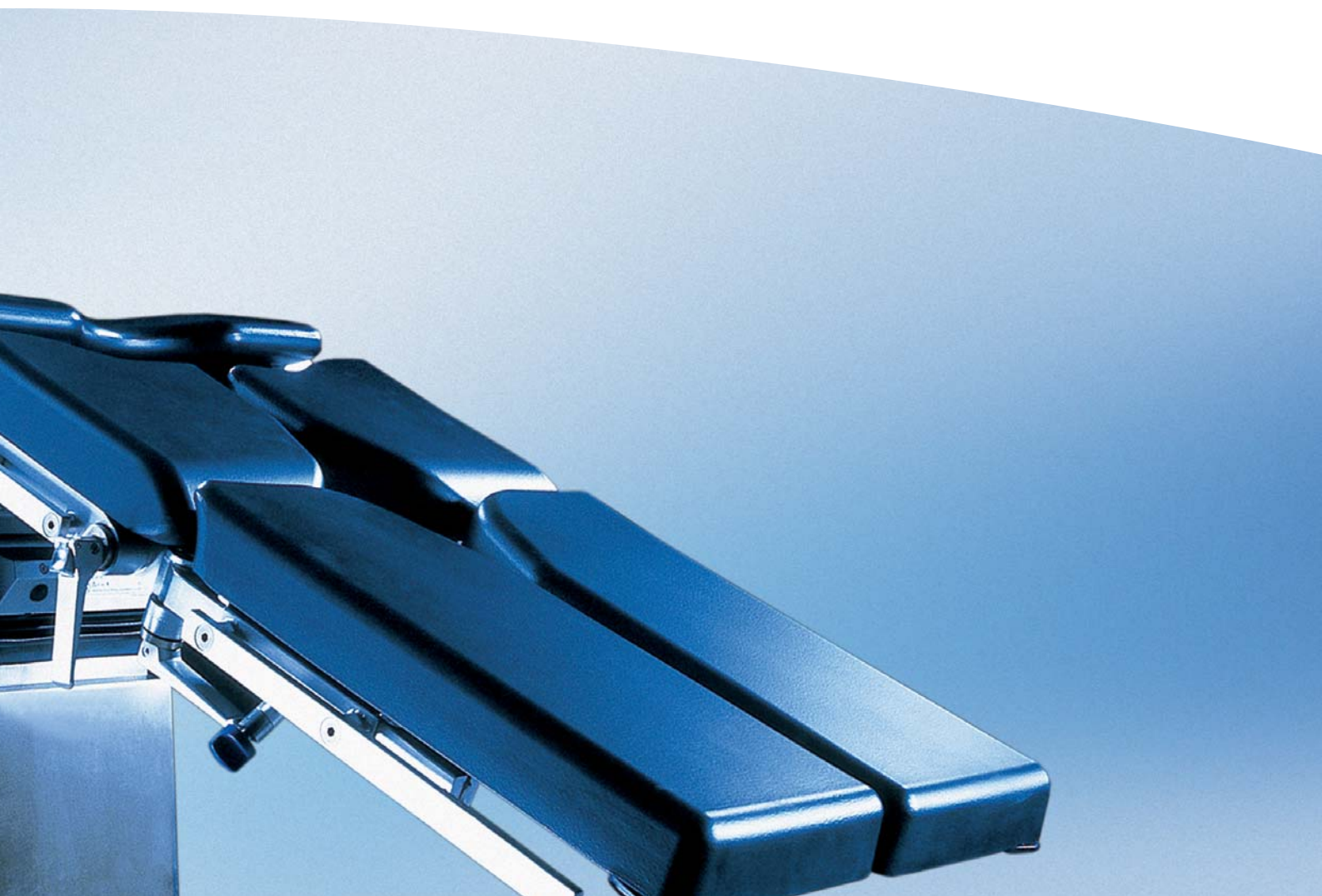
| Technical data         |                                                                   |
|------------------------|-------------------------------------------------------------------|
| Column cross-section   | 400 x 300 mm                                                      |
| Stroke                 | 495 mm                                                            |
| Patient weight 1150.01 |                                                                   |
|                        | 180 kg standard<br>plus 20 kg accessories                         |
| Patient weight 1150.02 |                                                                   |
|                        | 225 kg standard<br>360 kg maximum*<br>each plus 20 kg accessories |

\*depending on table-top and configuration



Dimensions and angles for standard equipment.

 **VDE**  CE-konform gemäß Richtlinie 93/42/EWG über Medizinprodukte



# INTERNATIONAL TRAINING CENTRE THE SURGICAL ACADEMY



*Further training on topical issues relating to medicine: the MAQUET Surgical Academy.*



*Practice-oriented: The MAQUET positioning primer conveys know-how on correct patient positioning.*



*AlphaSET: User-friendly software for quality assurance in the field of patient positioning on the surgical table.*

**Medical dialogue:** As a communication centre the MAQUET Surgical Academy offers a variety of specialist events on topics relating to medicine, health policy and hospital management. An exhibition hall with the complete product range, two auditoria with multimedia equipment, four conference rooms, as well as fully-equipped, functional operating and intensive care rooms are among the infrastructure at this unique facility.

**Profiting from workshops:** MAQUET not only converts its know-how into innovations, but also makes its extensive knowledge available to all its customers. Participants from all over Europe come together for our training courses to learn about the latest technologies from experienced experts. Valuable findings are conveyed in small groups working directly on the operating table.

**AlphaSET:** MAQUET offers a global innovation, the electronic positioning primer which explains the rudiments of surgical positioning step-by-step. This tool assists hospitals in quality assurance and documentation in the OR. The easy-to-operate software permits the storage of a clinic's own positioning standards, and thus serves as an information platform for the entire OR team. AlphaSET runs on a PC as well as on a hospital's IT network, and may be operated using a keyboard or touch-screen in the OR.

**Accompanying support:** All new installations of ALPHAMAQUET 1150 include extensive advice, professional training and device instruction. These measures are conducted by experienced practitioners. This makes a conversion easier, ensuring 100 per cent capacity utilisation of the new operating table system from the very outset.





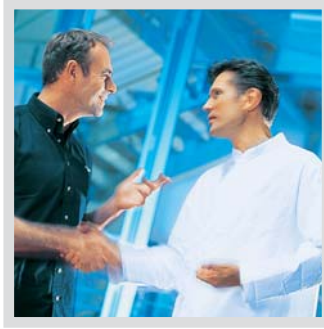
# GLOBAL CUSTOMER PROXIMITY MAQUET'S SERVICE NETWORK

*A comprehensive service network:  
MAQUET's own service unit is  
available round the clock per hotline.*



**First aid on site:** The diagnosis software Optiserp II provides reliable information about the system quickly. In the event of a malfunction the in-house technology specialists can poll the status of the PC interface easily. In many cases this reliable initial diagnosis helps to rectify errors more easily and, if necessary, to provide a service technician with detailed information,

thus ensuring that the deployment of service personnel is as time- and cost-favourable as possible.



**Competent service:** The global MAQUET service team comprises experienced specialists and ensures the maximum-possible assistance. Thus avoiding downtime in the OR and intensive care. And so that such irregularities never even occur, the MAQUET maintenance intervals enhance the functional security of the medical technology systems.



## Subsidiaries

### Australia:

MAQUET Australia Pty Ltd  
P.O. Box 50, Bulimba  
Queensland 4171, Australia  
Phone: +61 (0) 7 33 99 33 11

### China:

MAQUET International Trading Co. Ltd.  
1988-91 Tower B, City Centre of Shanghai,  
100 Zun Yi Road, Shanghai 200051, P.R. China  
Phone: +86 (0) 21 62371957

### Finland:

MAQUET Nordic Suomi  
Vattuniemenkatu 23  
00210 Helsinki, Finland  
Phone: +358 9 682 412 60

### Hong Kong:

MAQUET Hong Kong Limited  
1105-1107 Grand Century Place I  
193 Prince Edward Road West  
Mongkok, Kowloon, Hong Kong  
Phone: +852 2393 9 511

### India:

MAQUET Medical India Pvt. Ltd.  
102, Pressman House  
70A, Nehru Road  
Vile Parle (East)  
Mumbai 400 099, India  
Phone: +91 (0) 22 56755551-2-3

### Japan:

MAQUET-Getinge K.K.  
TFT Building, East Wing 8th Floor  
3-1-22, Ariake Koto-ku  
Tokyo 135-0063, Japan  
Phone: +81 (0) 3 3599-8361

### Latin America:

MAQUET do Brasil Ltda.  
Rua Said Aiach 161, Paraíso  
04003-20 São Paulo/SP, Brasil  
Phone: +55 (0) 11 2126 2500

### Netherlands:

MAQUET Netherlands B.V.  
Rijksstraatweg 37-39  
1396 JD Baambrugge, Netherlands  
P.O. Box 2  
1390 AA Abcoude, Netherlands  
Phone: +31 (0) 294 291555

### Republic of Ireland:

MAQUET Ireland  
Unit B6  
Calmount Business Park  
Ballymount  
Dublin 12, Republic of Ireland  
Phone: +353 (0) 142 60032

### Russia:

MAQUET LLC  
17, Vorontsovskaya Street  
109147 Moscow, Russia  
Phone: +7 095 514 0055

### Singapore:

MAQUET South East Asia Pte Ltd.  
20 Bendemeer Road  
#06-01/02 Cyberhub Building  
Singapore 339914, Singapore  
Phone: +65 6 296 1992

### Slovakia:

MAQUET Medizintechnik  
Vertrieb und Service GmbH – o.z.  
Soltsovej 12  
811 08 Bratislava, Slovakia  
Phone: +421 2 50219 150

### United Kingdom:

MAQUET Ltd.  
14-15 Burford Way  
Boldon Business Park  
Sunderland  
Tyne & Wear, NE35 9PZ, United Kingdom  
Phone: +44 (0) 191 519 6200

### For local contact:

Please visit our Website  
[www.maquet.com](http://www.maquet.com)

# MAQUET

MAQUET GmbH & Co. KG  
Kehler Straße 31  
D-76437 Rastatt, Germany  
Phone: +49 (0) 7222 932-0  
Fax: +49 (0) 7222 932-571  
Service-Hotline: +49 (0) 7222 932-745  
[info.sales@maquet.de](mailto:info.sales@maquet.de)  
[www.maquet.com](http://www.maquet.com)

## GETINGE

GETINGE GROUP is a leading global provider of equipment and systems that contribute to quality enhancement and cost efficiency within healthcare and life sciences. Equipment, services and technologies are supplied under the brands ARJO for patient hygiene, patient handling and wound care, GETINGE for infection control and prevention within healthcare and life science and MAQUET for Surgical Workplaces, Cardiopulmonary and Critical Care.